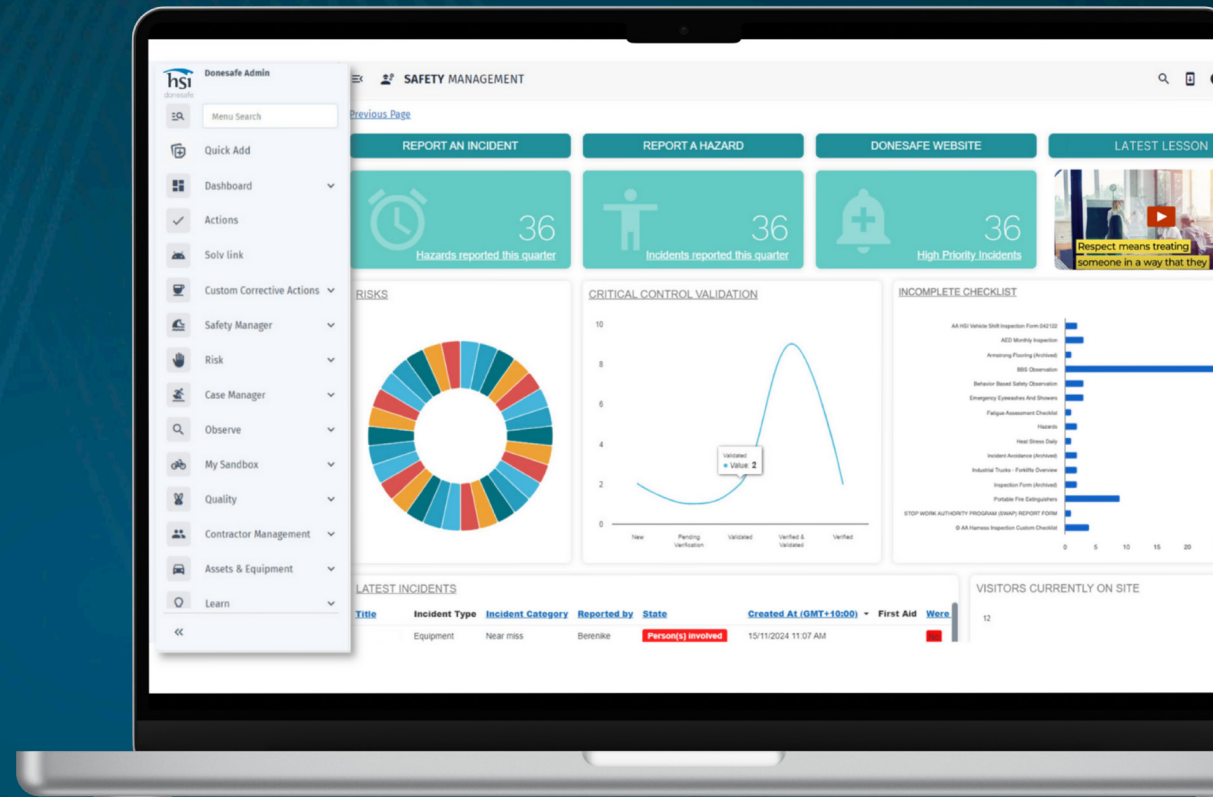


# HSEQ Modular Suite Overview

UK Edition



## Done with multiple HSEQ systems? Simplify your software with HSI Donesafe.

HSI Donesafe simplifies HSEQ. By seamlessly combining all Health, Safety, Environmental, Quality, Injury, Compliance and Risk Management programs into a unified system you'll reduce admin time while drastically increasing engagement. Accessible everywhere for everyone, from the front-line to the boardroom, your organisation's safety will always be in sync.

All your processes. All your actions. All your reports.

**All in one place.**

# Build your HSEQ program in one simple-to-use platform.

Software should support your HSEQ efforts, not make them harder. And that's how HSI Donesafe is designed.

## Easy Configuration

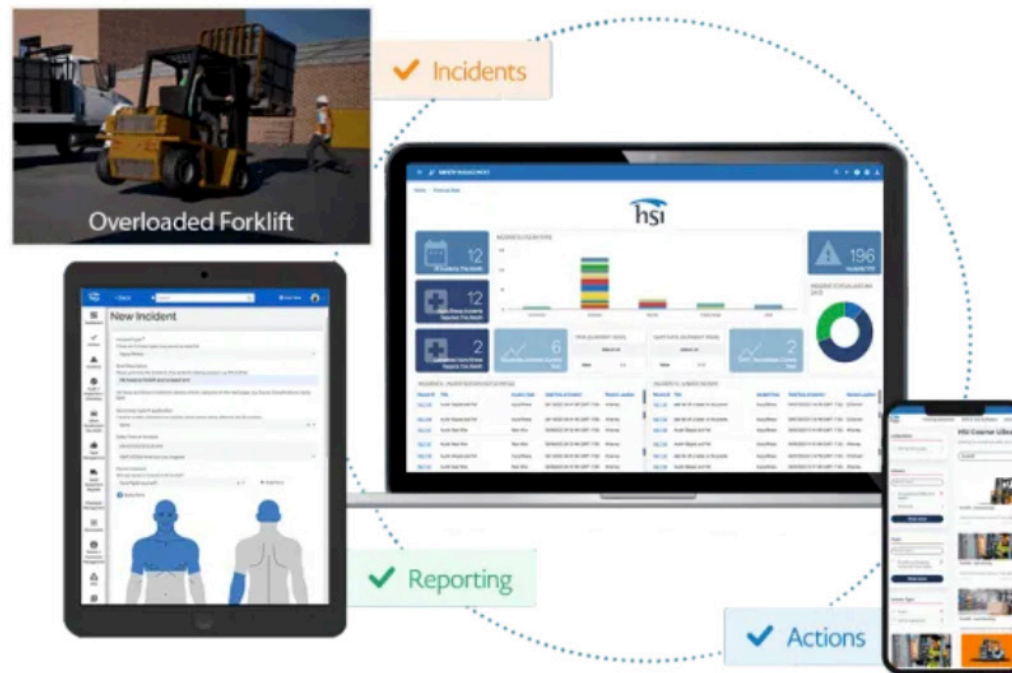
**Software that adapts to you.**

Simply configure the platform to suit your HSEQ system needs using our intuitive interface. Drag, drop, done.

## Integrated System

**Complete connection.**

All HSI Donesafe modules are linked and sync seamlessly with your existing systems, creating a cohesive compliance system across all departments.



## Effortless Actions

**No more data delays.**

Access workflows, automations and actions for proactive incident responses. Centralised, synchronised data enables real-time alerts and actions.

## Future Proofed

**Built for scale.**

Tick all the tech boxes - security, resilience, admin controls, authentication, integrations and reporting. HSI Donesafe scales with program demands.

# How can one streamlined system improve your HSEQ program?

Multiple systems create more work and unnecessary mental load.

By reducing the number of systems you'll simplify the complexity.

## Meet Compliance

- Align with legal, regulatory & government obligations.
- Meet ISO, Health and Safety at Work etc Act (HASAWA 1974), COSHH, RIDDOR and other regulations.
- Become audit-ready with complete audit trails.

## Manage Risk

- De-risk the workplace with proactive risk management.
- Incorporate risk frameworks into investigations and assessments.
- Actively manage risk with risk scoring, risk matrices, and robust risk controls.

## Drive Productivity

- Drive workforce efficiencies with cloud-based HSE technology accessible anywhere, including offline environments.
- Seamless digital workflows eliminate clunky paper-based, manual spreadsheets and other cumbersome systems.
- Lower admin overheads with automation, reminders & follow-ups to drive task completion.

## Centralise Processes

- Bring data collection and document management to a single centralised system.
- Streamline complex and disjointed workflows.
- Manage user profiles, actions, permissions & process controls in one place.

## Improve Visibility

- Track, monitor, and gather insights using real-time dashboards & analytics.
- Make smarter decisions faster with data insights surfaced instantly via alerts and notifications.
- Run advanced reporting for deeper insights and data mining utilising business intelligence (BI) capabilities.

# All the HSEQ modules you'll need.

With over 60 ready-to-go modules, you can build the system you need now and in the future.



Module	Description
<b>Asset Management</b>	<b>Manage all your assets under one place</b> Efficiently manage various assets in real-time by utilising QR codes to initiate activities like check-out, service requests, and inspections, configurable for diverse asset types such as PPE, tools, software, and fleet vehicles.
<b>Audit Management</b>	<b>Efficient audit management for streamlined compliance</b> Consolidate audit workflow and documentation into one system. Manage a universe of audits, scheduled, ad-hoc and linked to risk management registers and libraries.
<b>Business Continuity</b>	<b>Ensure business continuity with comprehensive management</b> Maintain operational resilience with dynamic Business Continuity Plans, Business Impact Analysis, dependency mapping, and real-time monitoring to mitigate disruptions and ensure seamless recovery.
<b>Certification Management</b>	<b>Efficiently track and manage worker certifications</b> Upload and track worker certifications along with relevant details such as expiration dates, issuing authority, and more to simplify compliance management.
<b>Checklist &amp; Inspections Management</b>	<b>Effortlessly run any checklist and inspection anytime, anywhere</b> The checklist and inspection module enables customisable digital checklists for diverse safety and compliance needs, facilitating real-time risk identification and management.
<b>Contractor Management</b>	<b>Streamline contractor compliance and remote management</b> Efficiently manage contractor compliance, from registration to insurances and qualifications, ensuring all mandatory requirements are met. Features include remote management and contractor self-registration.
<b>Control of Work (CoW)</b>	<b>Maximise Safety, Minimise Risk: Streamlined Control of Work</b> Enhancing safety and compliance by managing permit to work (PTW) processes, ensuring contractor safety, and coordinating work activities to mitigate risks effectively.
<b>Corrective Actions</b>	<b>Streamline, prioritise, and automate corrective action</b> Efficiently centralise, prioritise, and automate corrective actions, linking to findings, setting SMART goals, and ensuring timely completion with automated escalation.
<b>Crisis Management</b>	<b>Effective crisis management for organisational resilience</b> Equip your organisation to handle major disruptions with clear communication, stakeholder management, and swift recovery to maintain business continuity.
<b>Document Management</b>	<b>Centralised document control for efficient compliance management</b> Centralise storage and access to various documents, ensuring version control, approval processes, and tracking of user acknowledgments.
<b>Drug &amp; Alcohol</b>	<b>Manage drug and alcohol testing effortlessly</b> Ensure site safety with drug and alcohol testing, featuring random testing, third-party management, result capture, causation tracking, and lab coordination.
<b>Environmental</b>	<b>Achieve environmental excellence</b> Utilise comprehensive tools for incident reporting, compliance tracking, audit management, sustainability monitoring, waste management, and risk assessment to enhance environmental responsibility.

Module	Description
<b>Hazard Management</b>	<b>Streamline hazard identification and corrective action</b> Efficiently capture and address worker-identified hazards with multimedia support. Automated workflows ensure stakeholder notification, risk assessment, and corrective action.
<b>Incident Management</b>	<b>Capture, manage and action every incident.</b> HSI Donesafe's Incident Management software enables thorough incident tracking, investigation, no and corrective actions, supporting diverse methods in an intuitive platform.
<b>Inductions</b>	<b>Automate training, ensure compliance, streamline workflows</b> Automate the assignment of induction courses, track compliance, and access comprehensive reporting capabilities.
<b>Injury &amp; Claims Management</b>	<b>Streamline injury and claims management effortlessly</b> Efficiently manage injury and workers' compensation claims with centralised data, early intervention, automated processes, compliance, return-to-work plans, and comprehensive support.
<b>Learning Management</b>	<b>Streamline training management for enhanced workplace competency</b> Efficiently manage competency, e-learning, and training. Includes requests, records, certifications, skills assessments, surveys, course content, and SCORM compatibility. Simplify training assignment and tracking.
<b>Observations Management</b>	<b>Effortlessly improve safety performance with streamlined observations</b> Efficiently capture and assess safety performance and behaviours with a user-friendly interface for seamless reporting and analysis.
<b>Psychosocial Risk</b>	<b>Proactively reduce psychosocial risk factors</b> Identify, assess, and manage workplace psychosocial risks with tools for risk assessments, mental health tracking, incident reporting, and compliance, promoting a healthier work environment by addressing stress, culture, and support systems.
<b>Quality &amp; Supplier</b>	<b>Efficiently manage quality for compliance and efficiency</b> Streamline quality management for compliance and efficiency, tracking products, defects, feedback, and invoices in one centralised, resource-efficient system.
<b>Risk Management</b>	<b>Comprehensive risk management with seamless integration</b> Manage your organisation's entire risk cycle—from identification and assessment to reduction—using an automated, integrated framework that links with Incidents, Hazards, and Audit modules for a complete risk overview.
<b>Safety Alerts</b>	<b>Rapidly alert and educate your entire workforce</b> Distribute critical safety alerts and lessons across your organisation. Alerts integrate with emails, dashboards, and SMS, linking to attachments or external references.
<b>SWMS Management</b>	<b>Efficient SWMS management for enhanced workplace safety</b> Streamline the creation, approval, and tracking of Safe Work Method Statements (SWMS) to maintain compliance and enhance workplace safety through effective risk management.
<b>Vendor &amp; Supplier Management</b>	<b>Comprehensive vendor management for seamless supply operations</b> Manage vendor and supplier information comprehensively, including details like VAT, CRN, UTR, addresses, contacts, and performance tracking, integrating seamlessly with other modules.



# Looking for more? We've got you covered.

Explore our comprehensive module range.

Module	Description
Asbestos	<b>Streamline asbestos management</b> Effortlessly manage asbestos compliance. Centralise asbestos data, inspections, abatement projects, compliance, and reporting for comprehensive management and regulatory adherence.
Case Management	<b>Streamline case management with customised organisational tools</b> Streamline ER/IR processes with customised forms and templates, enabling end-to-end management and easy retrieval in company specific reporting formats.
Change Management	<b>Streamline and secure your change management process</b> Manage all change processes within a secure, auditable environment, from initiation and assessment to approval and review, ensuring comprehensive tracking and compliance.
Continuous Improvement	<b>Optimise operations with strategic continuous improvement tracking</b> Enhance organisational efficiency with a continuous improvement module that tracks feedback and ideas, prioritises initiatives, and measures impacts across configurable categories, linking to key business objectives.
Compliance Management	<b>Maintain standards, manage risks, ensure real-time compliance</b> Ensure continuous alignment with legal and industry standards using a compliance management module that offers real-time tracking and integrated risk management.
Customer Complaints	<b>Efficiently manage feedback, streamline operations, enhance responsiveness</b> Streamline customer feedback with tagging, manager review allocation, and logging interactions. Includes triage for follow-up into Incident or Change Management modules.
Emergency Management	<b>Centralise and ensure emergency preparedness and compliance</b> Streamline emergency management with a single module to track preparedness, manage drills, update training, and maintain compliance with evacuation procedures for all personnel.
Ergonomics	<b>Optimise workspace for safety and productivity</b> Enhance workspace design and practices for ergonomic well-being and productivity. Assess risks, recommend improvements, and implement preventive measures for a safer workplace.
Food Safety	<b>Streamline food safety and compliance effortlessly</b> Streamline food safety management with checklists, audits, and compliance tracking for standards like HACCP and ISO 22000, ensuring all food handling protocols are met.
Health & Hygiene	<b>Optimise health &amp; hygiene compliance effortlessly</b> Take control of your Health and Hygiene management with an end-to-end software solution. Health surveillance medicals, testing, vaccination registers, psychological safety, health records and more.

Module	Description
Attestations	<b>Efficiently manage risks and compliance attestations</b> Trigger attestations for compliance with obligations, licenses, and risks as part of our Governance, Risk, and Compliance suite. Customise areas like gifts and entertainment as needed.
Chain of Responsibility (CoR)	<b>Streamline chain of responsibility compliance effortlessly</b> Capture chain of responsibility incidents, journey assessments, load restraints, and vehicle allocation, linking to consignment details and Regulatory Review audits.
Chemical & SDS Management	<b>Streamline chemical management, ensure GHS compliance</b> Effortlessly manage chemical inventory, SDS, and compliance. GHS compliant, track quantities, storage, manifests, risk assessments, and receive record expiry notifications.
Contracts	<b>Streamline HSE contract management efficiently</b> Manage all elements of the Contract Register, including strategic sourcing, contract and tender information, workflow approvals and sign-offs, renewal dates and associated reporting.
Critical Control Management	<b>Risk mitigate with proactive controls</b> The critical control module identifies, prioritises, and monitors safety measures, driving proactive risk mitigation and compliance adherence, fostering a safer work environment.
Driver Qualifications	<b>Streamline driver records for safer vehicle operations</b> Compile employment, safety, and certification records for all vehicle drivers, enhancing oversight for both non-commercial and commercial operations.
Employee Module	<b>Efficiently manage employee records for streamlined operations</b> Centralise employee records, including qualifications, incidents, assets, and more. Seamlessly link modules for comprehensive employee management and easy access.
Fleet Management	<b>Optimise fleet management for safety and efficiency</b> Centralise fleet data for full visibility, receive service reminders, real-time incident alerts, and conduct inspections with ease to ensure vehicle safety.
Hazardous Materials	<b>Safely track and audit hazardous materials compliance</b> Efficiently manage hazardous materials locations, exposure risks, and compliance audits, including asbestos, PCBs, Lead, and ODS.
Infectious Disease Management	<b>Track infectious diseases with customisable reporting</b> Customisable platform for tracking infectious diseases, including reporting, triage, and case management, with dashboards monitoring confirmed cases, suspected persons, and voluntary isolation.

Module	Description
Insights Reporting	<b>Enhance insights, streamline reporting effortlessly</b> Streamline reporting and monitoring of KPIs, statistics, and data with customisable dashboards, drill-down features, and seamless integration across modules and external sources.
ISO Audits	<b>Efficient ISO audits streamline compliance effortlessly</b> Pre-configured module for ISO audits. Additional certification modules streamline compliance, from document storage to inspections and corrective actions.
JSA/JSEA JHA	<b>Optimise Workplace Safety with JSA/JHA/JSEA Management</b> Efficiently manage Job Safety Analysis (JSA), Job Hazard Analysis (JHA), and Job Safety Environmental Analysis (JSEA) to identify hazards, assess risks, and implement effective controls, ensuring a safer work environment
Non Conformance (NCR)	<b>Ensure quality and satisfaction with detailed tracking</b> Track non-conformance incidents with detailed investigations and corrective actions, ensuring quality and customer satisfaction across products or services.
Plant & Equipment	<b>Streamline compliance and maintenance with proactive alerts</b> Manage plant and equipment compliance seamlessly. Link to safety operations, conduct risk assessments, monitor service statuses, maintenance history, and set alerts for scheduled requirements.
Projects	<b>Comprehensive project oversight</b> Create projects to manage worker involvements, supervisors, SWMS, JSA's, safety hazards/incidents, and all other associated qualitative and quantitative data capture.
Self Insurance	<b>Streamline self-insurance compliance with centralised automation</b> Ensure compliance with self-insurance for injuries across jurisdictions. Centralise injury and self-insurance claims data, automate processes, and generate submission files effortlessly.
Sustainability Benchmarking	<b>Track, compare, and enhance ESG sustainability easily</b> Streamline tracking and analysis of sustainability metrics across activities, assess performance, and ensure vendor compliance with ESG goals through an integrated supply chain module.
Visitor Management	<b>Enhance site safety with integrated visitor management</b> Streamline site safety with an integrated visitor management system. Log, track, and communicate with all visitors and contractors, collect essential information, and issue QR coded badges.
Work from Home	<b>Ensure remote work safety with streamlined processes</b> Send requests for home office equipment, report a work-hazard at home, report a work related incident at home or complete an ergonomic assessment.

Module	Description
Investigations	<b>Streamlined HSE investigations end-to-end</b> Streamline HSE investigations with integrated tools for root cause analysis, enabling targeted corrective actions to prevent future incidents and enhance workplace safety.
Job Management	<b>Streamline job processes with customisable management tools</b> Streamline job management with customisable forms and templates, facilitating end-to-end ER/IR process handling and data retrieval in your preferred reporting format.
Knowledge Base	<b>Streamline compliance policies with centralised knowledge base</b> Centralised platform for creating, editing, and publishing compliance policies and procedures. Easily link site-specific and general items, trace worker acknowledgments.
Obligations Management	<b>Ensure compliance with ease and efficiency</b> Ensure compliance with regulations, licenses, and permits by assigning owners, tracking corrective actions, and monitoring progress in real-time with a centralised dashboard.
PPE	<b>Optimise PPE management and compliance effortlessly</b> Efficiently manage PPE inventory, ensure legislative compliance, and automate maintenance and replacement schedules.
Safety Meetings	<b>Easily track, communicate, ensure compliance</b> Facilitate effortless organisation and documentation of WHS toolbox meetings, safety committee gatherings, and one-to-one discussions, ensuring effective communication and compliance tracking.
Self Assessment	<b>Prevent disease spread with pre-entry screening</b> Screen workers with self-reported health status before they report to an office location where a contagious/infectious disease such as COVID-19 or influenza may sicken and reduce the workforce.
VaxSafe	<b>Streamline tracking and reporting securely</b> Centralise and secure vaccination and testing status tracking with real-time updates and self-service submissions.
Warden Management	<b>Elevate emergency preparedness</b> Efficiently oversee warden management lifecycle, from induction to retirement, including certifications, drills, PEEP creation, and associated corrective actions, ensuring comprehensive emergency preparedness.

# Still can't find what you need? **Simply build it.**

With our easy-to-use module creator, you can quickly build, integrate, and scale any HSE module.

Unlock endless scalability and flexibility with HSI Donesafe's drag-and-drop tools. Anyone can create and integrate modules seamlessly - no coding needed.

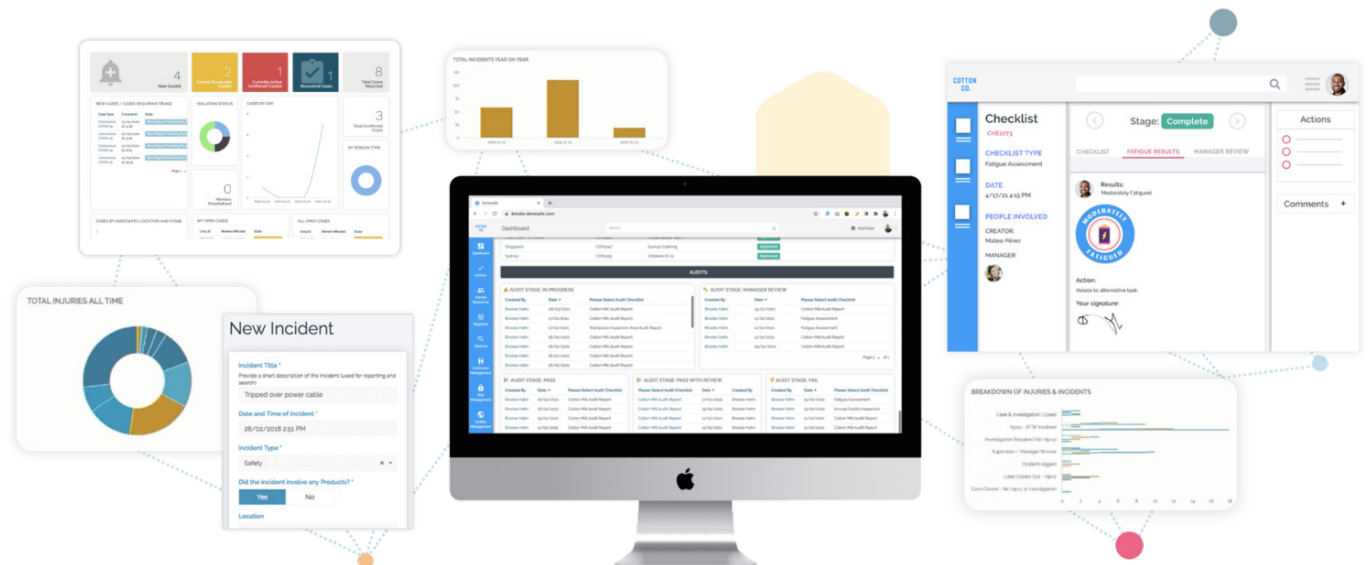
## Need something customised?

Don't wait for a developer - simply make the changes you need and apply them instantly.

## Need something more?

If you have a complex use case that we don't yet have a solution for, our team of experts can help you build it, quickly.

Thanks to our platform's adaptability, we're yet to find a use case we couldn't solve.





# Frequently asked questions.

## What modules are available within the HSI Donesafe suite?

HSI Donesafe offers over 60 modules, including Incident Management, Risk Management, Compliance Management, Audit Management, Training Management, and Hazard Management. Additionally, users can create custom modules using a simple no-code environment, allowing for tailored solutions to meet specific business needs.

## How easy is it to start with HSI Donesafe and grow over time?

HSI Donesafe's modular design lets you start with the modules you need and add more as you grow. This ensures seamless integration, with workflows, actions, and insights all working together, allowing you to scale at your own pace.

## How configurable are the HSI Donesafe modules?

The modules are highly configurable, allowing users to tailor workflows, forms, and fields to meet their specific business needs and industry requirements.

## Can HSI Donesafe cross-reference data between different modules?

Yes, HSI Donesafe offers powerful cross-referencing capabilities, allowing data from different modules to be linked and analysed for comprehensive insights.

## How does HSI Donesafe integrate compliance and risk management?

HSI Donesafe integrates compliance and risk management by providing tools to identify, assess, and mitigate risks while ensuring compliance with relevant regulations and standards.

## What are the benefits of unified workflows and actions in HSI Donesafe?

Unified workflows and actions streamline processes, reduce duplication of effort, and ensure consistent application of procedures across the organisation.

## What reporting and dashboard capabilities does HSI Donesafe provide?

HSI Donesafe offers powerful reporting and dashboard capabilities, allowing you to generate, export, and analyse data through custom reports and real-time dashboards tailored to various roles. This provides key metrics and performance indicators for informed decision-making.

## What are the benefits of HSI Donesafe's admin controls and centralised management?

HSI Donesafe offers robust admin controls and permissions, providing a single view and control of users, centralised actions, workflows, and data management. This streamlines operations, enhances security, and improves compliance, ensuring efficient and effective HSE management from one platform.

## What are the benefits of centrally capturing all data on the HSI Donesafe platform?

Centralising data across all HSE modules on the HSI Donesafe platform allows for real-time actions, efficient management, and monitoring. This unified approach provides a single source of truth, enabling comprehensive insights and reports. It enhances decision-making, improves compliance, and streamlines operations by ensuring all HSE data is easily accessible and actionable from one place.

# Smarter software to keep your people safe.

**5x**

More data & insights captured

**300%**

Increase in reported events

**95%**

Employee adoption rate

**75%**

Reduction in incident rate



“

Now that we have this treasure trove of information from all our projects, we can process that data in real time, identify our problem areas, and pro-actively put our focus on the highest risks before incidents happen.



**Pimmie Aendenboom**  
QHSE Manager for Business Unit International

“

From a cultural perspective across all levels of senior management through corporate and in the restaurants, HSI has started to change the culture of safety in McDonald's restaurants. Employee engagement in safety is up 500% company-wide. And it has reduced the huge time drain of our previous processes.



**Yvonne Argent**  
National Workplace Safety Consultant

# How to get started.

## When you're ready, we're ready.

Tell us about your challenges and one of our team will advise you of the right modules to begin with. Together we'll roll out a plan that has low stress and high adoption, ensuring a smooth transition for you and your team.

Get in touch and transform your HSEQ program today. ....>

## Market leading software loved by customers.



### Book 1:1 demo now

Experience the power of HSI Donesafe with a guided demo tailored to your use cases.



#### Visit:

[www.donesafe.com](https://www.donesafe.com) or



#### Call Us:

UK/EMEA 0800 011 9190  
Australia 1300 137 408  
New Zealand 0800 000 786  
North America (800) 447 3177



## Why choose HSI Donesafe?

Our simple-to-use software is built to make your HSEQ program successful.

HSI Donesafe is the only software that provides complete Health, Safety, Injury, Environmental, Quality, Risk, and Compliance Management in one integrated cloud-based platform.

Simple for workers. Simple for admins. Simple for you.



## There's safety in numbers.

**22K+**  
Customers

**4M+**  
Users

**47Y**  
Experience

**71**  
Countries

**630**  
Employees

**83M+**  
Records Created  
Annually

**850K+**  
Daily Active  
Users

Local expertise, global support. HSI Donesafe is a division of HSI, a global single-source partner for HSEQ, ESG, training, compliance and professional development solutions. The world's largest companies, including Fortune 500 companies and many listed on the FTSE100, rely on our software to make their workplaces future ready and keep their people safe.

[donesafe.com/uk](https://donesafe.com/uk)